



Morgana FB1190<sup>T</sup>  
B1 Digital-Die Flatbed Cutter/Creaser

# ColorCut flatbed cutting tables

Our **flatbed cutting table** range is **designed in the UK, beautifully engineered, totally accurate and highly affordable** - defining a new industry standard.



Perfect for light to medium production of two and three dimensional items, the ColorCut FB1190-T suits the cutting and creasing of virtually any form of print from cardboard packaging and protective cartons to synthetic point of sale and kiss cut stickers/labels. And with the ability to digitally produce items on demand, also FB1190-T perfect for prototyping.

Combined with our industry leading ColorCut Pro software, the FB1190-T brings advanced features to aid design and production.

## One model for a selection of media

The FB1190-T comes complete with a selection of creasing tools, industrial cutting blades, and superior cutting mats to suit a wide range of materials being cut including N/F/E fluted boards, mount boards, FBB, lightweight cards, papers, sticker/label stock and synthetic substrates. There is also a range of optional creasing wheels further expanding the flexibility of the machine along with an optional perforating wheel.

Create stunning packaging with superb creasing and crisp cut lines/perforations on heavier-weight stocks.

Also nothing new to learn. The simple and intuitive ColorCut Pro software, that is supplied with the cutter, enables you to work directly with the leading graphic design applications; Adobe® Illustrator® or CorelDRAW® enabling you to use the design software you already know.



**Designed and developed to deliver the accuracy, speed, ease-of-use and reliability demanded by print professionals.**

- **Engineered for reliability.** Designed in the UK, the ColorCut flatbed FB1190-T has a pedigree of solid engineering, robust mechanical parts and the latest high-tech electronics for ease of use - all at an extremely affordable price point!
- **Digital die cutting.** Advanced digital contour cutting - no need for a traditional die
- **Deliver on demand.** Cuts a typical SRA3 sheet in just 30 - 60 seconds. Produce singles or as many as 1,000 sheets per day
- **Vacuum hold down table.** Sheets are held securely in place by a vacuum produced from a powerful centrifugal air pump
- **Job sensing.** Accurate crease and cut registration to the printed sheets with SmartMark and QR Code reading
- **Batch productivity.** Multiple sheet cutting helps speed up productivity
- **Cutting heads.** Delivering over twice the pressure of other models in its class, the ColorCut FB1190-T uses a tool head where tools operate independently from each other for all functions
- **Fingertip control.** The intuitive touch screen control panel integrates with included ColorCut Pro (see software section)
- **High power vacuum included.** All Morgana ColorCut flatbeds come with an extremely powerful centrifugal air pump which provides the power to hold down printed sheets. An auto cut-off feature announces the end of each cut job. The pump is housed within an attractive, purpose made acoustic housing and supplied with an effective silencer

# Tools and Accessories

## FB1190<sup>T</sup>

**Creasing wheel tool.** Active Tangential Creasing Wheel tool. 2 options available for different material types. *Both provided with cutter.*



**Standard Wheels (included with the FB1190<sup>T</sup>)**

**FB-UMAGT-00W1** - Tangential Wheel Holder including tangential wheel 1 for E/F fluted boards

**FB-UMAGT-00W2** - Tangential Wheel Holder including tangential wheel 2 for N fluted, FBB/SBS/SBB packaging boards



**Optional Wheels (not included with cutter)**

**FB-UMAGT-08A** - Tangential Creasing tool - Narrow 0.28mm

**FB-UMAGT-08B** - Tangential Creasing tool - Medium 0.55mm

**FB-UMAGT-08C** - Tangential Creasing tool - Wide 0.95mm

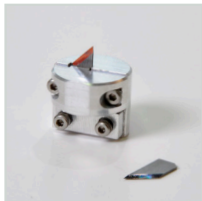
**Perforating tool.** Active Tangential perforating wheel. *Available as an option (not included with cutter.)*



**Optional (not included with cutter)**

**FB-UMAGT-10A** - Tangential Perforating Wheel tool - 1.68mm pitch

**Cutting tool.** Active Tangential Cutting tool to hold a 45° blade. Blades shown are purchased separately. *Provided with cutter.*



**Options**

**FB-UMAGT-03A** - Tangential Blade Holder

**Creasing tool.** Passive ball creasing tools; one narrow and one wide for different media or crease widths. *Both provided with cutter.*



**Options**

**FBT0007** - Passive Drag Creasing tool - Wide

**FBT0008** - Passive Drag Creasing tool - Narrow

**Cutting tool.** Passive Blade Holder tool to hold the cutting blade of choice. The tool is manually adjustable to obtain the desired amount of 'blade out' for the job in hand. *See cutting blades section.*

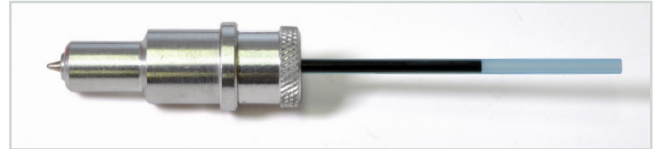


**Options**

**FBBLHOL** - Passive Contour / Drag Blade Holder tool

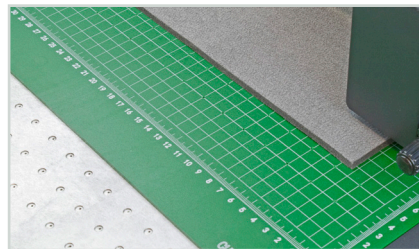
## Universal tools and accessories

**Calibration tool.** A pen calibration tool is used at set up and then periodically, to calibrate the cutter.

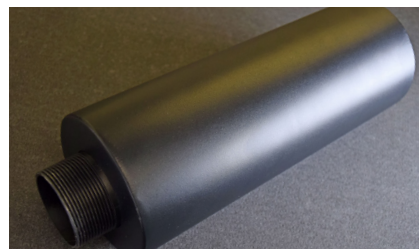


**Cutting mats.** Green self-healing mat is manufactured from a particular rubberised compound enabling blades to sink into its surface without causing surface damage. This mat is ideal for obtaining crisp cuts on thinner materials. Vacuum suction flows through the perforations to hold printed sheets in position.

The grey felt mat is perfect for achieving deeper creasing lines and cuts on thicker substrates. The natural density of the fibres allows the vacuum flow to pass through it for sheet retention.



**Acoustic silencer.** Reduces sound level of vacuum pump. Provided with the FB1190<sup>T</sup>.



# Tools and Accessories

## A comprehensive range of tools and accessories, made for ColorCut.

A full range of original manufacturer parts and accessories are available for after-market purchase. Spares can be purchased at time of ordering the flatbed and/or shipped overnight as and when required.

### Cutting blades

**Tangential blade.** 45° 5.5mm blade for heavier / thicker stocks up to 3mm. Pack of 3 provided with cutter.



**Stock codes**

**FBBLT45** - Tangential blades

Pack of 3

**FBBLT45-K15** - Tangential blades

Pack of 15

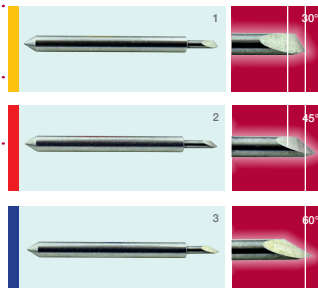
These ultra-sharp and hard-wearing swivel/drag blades come in two types and three blade angles. Either as a pack of three the same or as a mixed pack.

#### Blades for kiss cutting/half cut:

**Yellow** 30° 1mm  $\varnothing$  - for film, very soft material, thin label material

**Red** 45° 1mm  $\varnothing$  - typically for labels, stickers, and thin paper/card

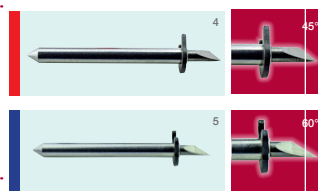
**Blue** 60° 1mm  $\varnothing$  - for hard media. The sharply angled tip provides a sharper point edge. Suitable for penetrating harder media types



#### Circlip blades for die cutting:

**Red** 45° 1.5mm  $\varnothing$  - Most packing board up to 750 micron. Circlip provides better pressure and improves blade direction changes on dense media, from 0.25 to 0.75 mm thick

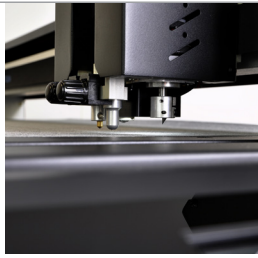
**Blue** 60° 1.5mm  $\varnothing$  - For dense, rigid or thick media. Sharply angled tip provides a sharp point ideal for polyester, PVC or magnetic materials. 0.25 to 1.2mm



**Blade legend:**

- 1. 30° blade
- 2. 45° blade
- 3. 60° blade
- 4. 45° circlip knife
- 5. 60° circlip knife

# ColorCut flatbed cutting tables



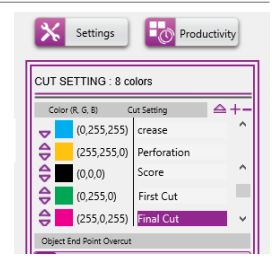
Quad tool head for rapid cut and crease capability



Standalone - NO WIRE job processing from a USB drive



QR job coding delivers multiple and mixed job functionality



Powerful, yet easy to use ColorCut Pro software included

## Tangential and contour tool control

The Morgana FB1190<sup>T</sup> offers a choice of tools to include Passive Contour and Active Tangential cutting and creasing. This provides different finishing options for varying media types.

**Tangential tools** are active tools where the direction of the tool is controlled by a motor. Tangential technology enables tools to be lifted up from the media, rotated and lowered back into the media. Suitable for creasing wheels for a smooth more defined crease or to enable deeper, precise cuts for thicker (often fluted) stock.

In contrast, a passive **contour tool** remains in the media during cutting or creasing, dragging the tool which will passively rotate faster, but suited to thinner card and labels.

## Enhanced control

The cutter is built on the foundation of Morgana's next generation of Ai based ColorCut software which delivers new features, functionality and control, redefining how flatbed cutters can be used, easily, simply and autonomously by providing 2 modes users can employ for cutting files.

**DIRECT mode:** ColorCut Pro offers unparalleled flexibility and control over cutting and production enabling all options to be adjusted on the fly.

**HELD mode:** ColorCut Pro stores your job parameters, wrapping all the required settings into a custom held mode cut file, that can be transferred via a storage device to the cutters. This enables standalone operation, without the need for the main PC.

Held mode is ideal for **repeat cut jobs** that need to be **cut at any time, by any user.**

## colorcutpro

Digital Die Cutting

### ColorCut Pro 5

ColorCut Pro has been developed exclusively by Morgana to work the way you work! No new software to learn when designing your jobs, offering key productivity features to deliver exactly the kind of user experience that we know the print finishing industry demands.

### QR Code Reading

The flatbeds utilise 9th generation ARMS technology, with an on board Vision3 CCD video camera, scanning the QR code, to instantly retrieve the associated cut/crease file and read SmartMarks for perfect registration.

This system works with the FB580, FB780<sup>T</sup> and FB1190<sup>T</sup> models and other Morgana auto feed ColorCut finishing solutions. Enabling you to add more Morgana cutters to your line up, moving jobs between devices easily.



100% digital - no physical dies



# ColorCut FB1190-T

**B1 flatbed cutting table with quad tool head, includes 2 active tangential tools for crease and cut and passive contour/drag cut and crease.**



Super fast B1 flatbed cutter including 4 tools, both contour cutting tools and active tangential tools. The FB1190-T is precise enough to cut labels yet its amazing 4 tool selection provides users with the option to switch to high force cut and crease for thick N/F/E fluted media, and a diverse range of media in-between.

Perfect for on demand prototype pieces to light production runs of two and three dimensional items, the FB1190-T flatbed cutting table can cut and crease virtually any form of print, from sample packaging, to high-end products, protective cartons or synthetic point-of-sale items and kiss-cut adhesive labels.

## Market leading features

- Tangential & contour quad tool head
- Highly productive
- QR driven jobs
- Standalone production
- Reverse Side Scanning
- Vacuum hold down

## Media

- Folding Box Boards, SBS, SBB and sheet card
- Corrugated and mount boards
- N/F/E fluted boards
- Synthetics
- Paper/rice paper
- Sheet labels
- Magnetic media and more!

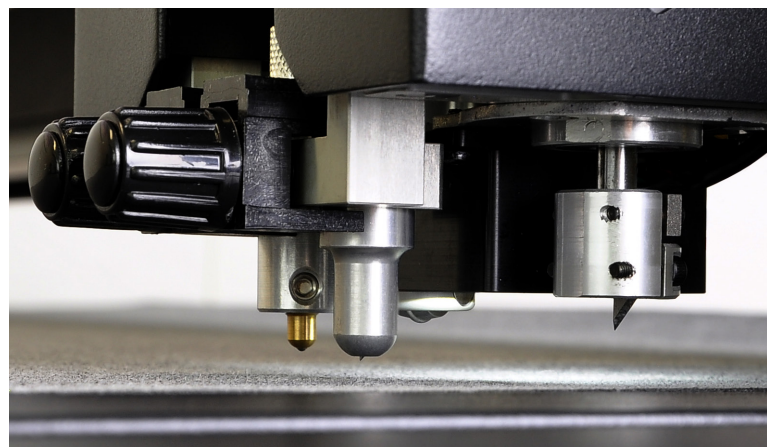
## B1 Tangential digital flatbed cutter/creaser

The FB1190-T offers the largest cutting table in the ColorCut range with an enhanced cutting head.

It's **quad tool head** includes **passive** contour/drag cut & crease tools PLUS 2 further **active tangential** tools, with full functionality for use with **creasing wheels** and **deep cutting blades**. This offers more flexibility to cut materials up to 3mm thick, yet its control and precision also allows for more delicate label sheets to be kiss-cut.

The NEW Magnetic mount tool system for the Tangential tools on the FB1190-T enables easy tool fitting, and an enhanced range of optional tools with additional Creasing wheel types and even a perforating wheel from Morgana's new Universal Magnetic Tool range.

Users can maximise efficiency with its batch mode functionality by putting multi sheets up on the bed, making it is the most flexible and productive cutter in the range.



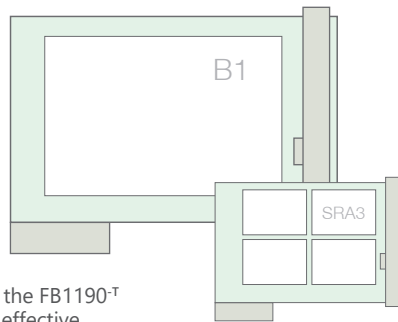
*High force, rapid 4 tool head, includes 2 active tangential tools*

# ColorCut FB1190<sup>T</sup> Summary

Depending upon typical **job type, run volumes** and **physical space**, there's a **ColorCut flatbed** to suit virtually all users!



**FB1190<sup>T</sup>**



*The optional ColorCut Pro Server Station streamlines production workflow and automates productivity.*

**Market position** With the largest cutting table in the range, the FB1190<sup>T</sup> handles sheets up to B1+ (720 x 1020mm), with a maximum effective cutting area of up to 680 x 1020mm - ideal for larger sheets.

As the flagship model in the range, the FB1190<sup>T</sup>, includes an enhanced cutting head with the flexibility of cutting corrugated / fluted boards N/F/ and E types (up to 3mm), yet with the precision and control to cut all media below including delicate label media.

The most flexible and productive machine in the range, the FB1190<sup>T</sup>'s head has 4 tool options, providing the user with a choice of either an Active Tangential or Passive Contour tool for either tool position, delivering unparalleled flexibility. Users can maximise efficiency with a batch mode function, to cut multiple and mixed sheets up, on the table.

It is also delivered with a powerful 1100W vacuum fan.

MODEL FEATURES FB1190 <sup>T</sup>	
Maximum media area	800mm x 1100mm
Effective contour cutting area	680mm x 1020mm
Selectable tools / force <i>2 tools active at 1 time from selection of 4</i>	Tool 1: Active Tangential or Passive Contour Tool / 2,500gf Tool 2: Active Tangential or Passive Contour Tool / 2,500gf
Cutting system	Active Tangential Knife or Passive Blade Holder
Creasing system	Active Tangential with Creasing Wheel or Passive Creasing Ball
Speed settings	High Definition / Standard / Fast
Maximum cutting speed	750 / 960 / 1,200 mm/s
Registration system	High speed - Vision3 CCD camera 9th Generation ARMS technology
Job recognition	Advanced QR code for instant job recognition and registration
GENERAL	
Media hold-down method	1100W Vacuum suction
Acoustic cover for vacuum pump	Yes
Silencer	Included
Stand	Included
Weight (unrated)	109kg
Maximum dimensions* L x W x H	1635 x 1360 x 1098mm (includes vacuum fan)

Note to all devices:  
\* Maximum dimensions relate to assembled machines and reflect full extremities of each device to allow for aspects such as tool beam and vacuum hose.



# ColorCut Pro Server Station

## The optional **ColorCut Pro Server Station** streamlines production workflow and automates productivity.

Realise the full potential of ColorCut Pro software, through the ColorCut Pro Server Station. Its innovative features will streamline the entire cutting process, increase workforce productivity, reduce costs and increase profits.

The Server Station provides an enhanced user interface, which significantly increases the power and functionality of ColorCut digital die cutters. Its additional software suite, frees up graphic designers' computers, so they can get on with the job of designing more jobs, while print finishing operators use the Server Station, as a production device to cut and crease jobs.

### Key features

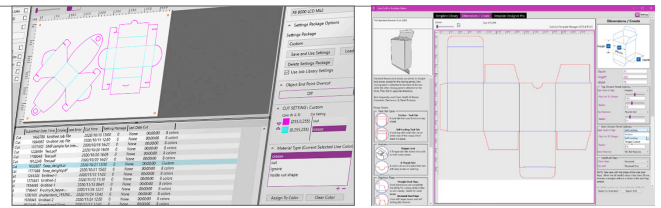
- Mac or PC systems running ColorCut Pro can transfer cut files over the network to the Server Station Job Library
- Assigned job numbers and QR codes enable instant retrieval of the printed jobs associated cutting file
- Cut file settings can be adjusted without having to re-open the original design file
- No skilled operators required. ColorCut Pro stands alone

### What is the Server Station?

The Server Station is a hardware workstation & software bundle comprising of an ergonomic, free-standing pod, pre-installed with additional ColorCut Pro software suite, which includes:

- Production Studio + additional user licence
- Template Maker
- Job Library Manager

Running a stand-alone version of ColorCut Pro on the Server Station acts as a network hub enabling Mac and PC users to send their cut jobs from the ColorCut Pro client on their graphic design PCs &/ or MAC's, directly to the Server Station. This **builds a central library** of cutting jobs ensuring operator's can access all jobs saved to the ColorCut Pro Job Library at any time, without requiring Adobe® Illustrator® or CorelDRAW® and without having to re-open the original file. This frees up your graphic designers and enables them to continue working, making the server station a compelling addition for both Mac or PC environments.



Job Library Manager - a repository for all saved cut files

Template Maker - create simple cartons and packaging designs

### The software components explained

**Production Studio:** The core application for production and operating the cutter. The easy-to-use interface enables an operator to position sheets for cutting and click START on the software. The QR Code printed on the job sheet enables ColorCut Pro Production Studio to automatically and instantly retrieve the correct cutting file, then start cutting jobs. Job numbers can also be used, enabling an operator to load and send jobs directly to the cutter without need for any additional software.

**Job Library Manager:** Adds a sophisticated level of control enabling custom job naming and identification, viewing and even assigning unique or custom actions to specific QR codes or Job numbers.

**Template Maker:** Create die-cut templates for a range of simple cartons and shaped items with your own dimensions in just a few seconds. This intuitive program allows for a wide range of options to tailor X, Y, Z dimensions, flaps, tucks, creasing and perforations etc. Templates can then be exported to Adobe Illustrator or CorelDRAW for immediate use.

**Additional software licence:** A real benefit for the workforce, as it allows for two additional user seats for multiple ColorCut Pro Clients - which really helps in a networked environment.

*\*Only available with the ColorCut Pro Server Station.*





# ColorCut FB1190-T



## Primary features

**Highly productive** - high speed and high pressure cut and crease, for prototyping of singles or multi-sheet 2/4/8 up rapid production for more jobs.

**QR driven jobs** - instantly & automatically finds cut files.

**Standalone production** - the 'NO WIRES' file system. Load jobs from a USB drive, view and display jobs on the large touch screen, select them by name, or simply auto-select the correct cut file and cut the job by pressing the SCAN button. One million job capacity.

**Reverse side scanning** - patented technology enables you to scan marks on the front of your sheet, flip the sheet over and cut and crease from the rear - offering more cutting and creasing options depending on media selection.

**Vacuum hold down** - Includes a powerful 1100W vacuum system with acoustic muffler that keeps cut pieces firmly in place, for fast and accurate processing, yet provides a quiet & comfortable operating environment.

**Quad tool head** includes passive contour/drag cut & crease, with active tangential tool functionality using alternate tool positions; suitable for use with Morgana's Universal Magnetic Mounting tool range of creasing wheels, extended depth cutting blades and perforating wheels.

### Creasing & Perforating Tools

- Active Tangential Creasing Wheel includes 2 interchangeable wheels for different media types
- Additional (Optional) range of 3 creasing wheel to enhance creasing options for different media.
- Additional (Optional) perforating wheel, for tear off vouchers, coupons or tickets.
- Passive Ball Creasing & Embossing tools; one wide or one narrow for different media or crease width or embossing features.

### Cutting blades and tools

- Active Tangential cutting tool with deep knife 5mm / 45° blades x 3 Tangential blades included
- Passive contour/drag knife cutting tool  
Drag blade set - included with standard and circlip blades in 30°, 45° and 60° angles

# ColorCut Pro Software



**ColorCut software** enables designers to generate cut files with **registration marks** and **QR codes** with associated **job numbers** as part of the design process.

## Software

### ColorCut Pro explained

ColorCut Pro consists of two parts, the first is the ColorCut Pro Client, a plug-in to Illustrator for Mac or PC creatives or to CorelDRAW (PC only). This enables designers/artworkers to generate cut files without the need to learn any new applications. The ColorCut plug-in also adds the ability directly into your graphics application to add both cut registration marks and QR codes with associated job numbers, easily, simply and as an integral part of the design process. It also saves each cut job into a ColorCut Pro job library for instant retrieval at any time, now or in the future.

Adding the QR codes and job numbers, is a key part of the ColorCut Pro magic, with QR codes the ColorCut flatbeds are able to retrieve previously prepared cut files without the need to launch Adobe® Illustrator® or CorelDRAW®. In fact this means, that after a graphic designer has sent the job to print, in a production print environment, any user can collect the sheets from the printer and cut them without needing to trouble the graphic designer to ask what cut file to use, or where it is stored.

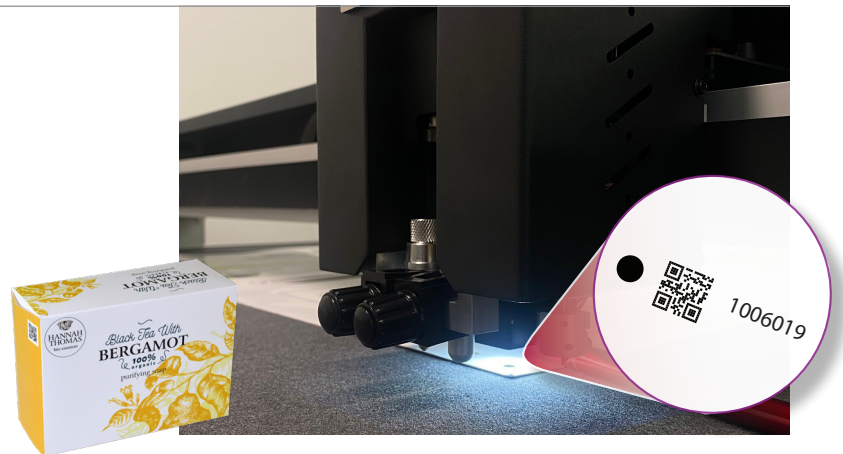
## Making production tasks easy

- No new drawing program to learn
- ColorCut Pro accepts vector lines directly from Adobe Illustrator & CorelDRAW
- Line colour identification
- Material/Action Database
- Control cutting tool speed & force using SmartLine colour
- Productivity mode enables multiple job cutting
- Generate and assign QR Codes to jobs, saving the cutting file to the job library for retrieving later

## Key features

- Plugin to add registration marks and QR codes for Adobe Illustrator (MAC & PC), CorelDRAW (PC)
- Can cut with or without registration marks
- Customisable registration mark position
- Automatic sensor calibration
- High tolerance to variation in brightness, for coloured media or white marks on dark paper
- Software automatically adjusts for print scale, skew or position errors - up to 5mm
- Automatically turns off vacuum after cutting
- Application environment works in mm or inches
- Working interface can be independent of your drawing program
- Save files to store on USB to use directly in the cutter without the PC

# ColorCut Pro Software



## Cut by colour

### Colour recognition

ColorCut Pro makes cutting jobs simple. It is easy to set-up cutting, perforating, scoring, kiss-cutting and creasing processes by using different colours in the design.

ColorCut recognises different colours in the cut file allowing users to assign different operations, or the order in which they are performed. Another key advantage is colour assignment can be changed (if your customers use different colours).

## Auto scan QR code and registration marks

### Cut file acquisition and job placement

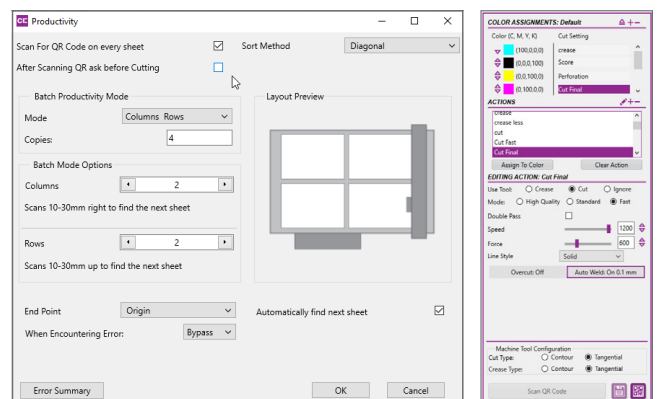
The cutters in-built camera reads the QR code on each printed sheet and automatically retrieves the associated cutting file from the ColorCut Pro Job Library.

Additionally the camera reads the registration SmartMarks placed in each corner of the sheet, for positional accuracy. Advanced features compensate for print skew or positioning skew to ensure precise cut registration.

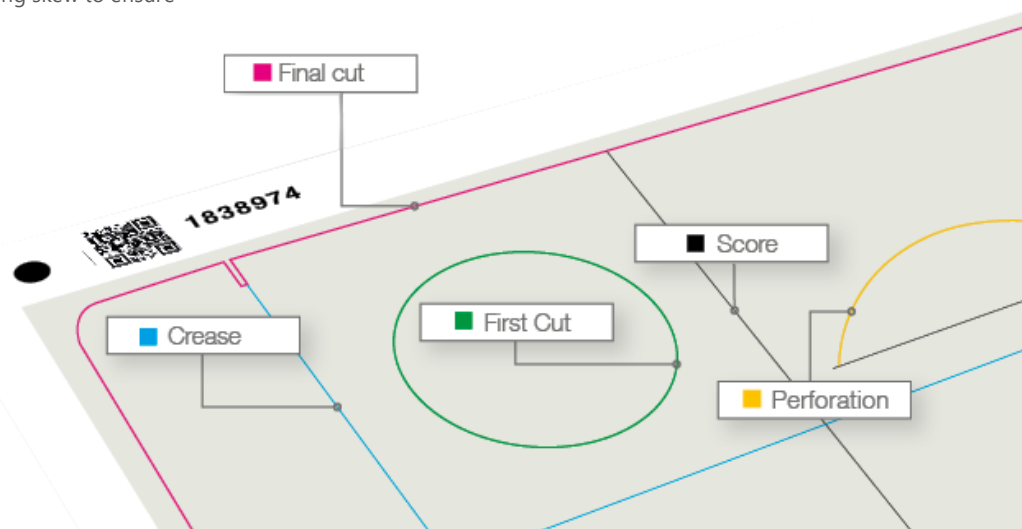
## QR driven workflow

### Process single/multiple or mixed jobs in the same run

The QR workflow has massive benefits in that it will access the correct cut file for each job placed on the cutting table, this means you can have each job uniquely different from the next, enabling the processing of mixed jobs in one pass.



Batch productivity



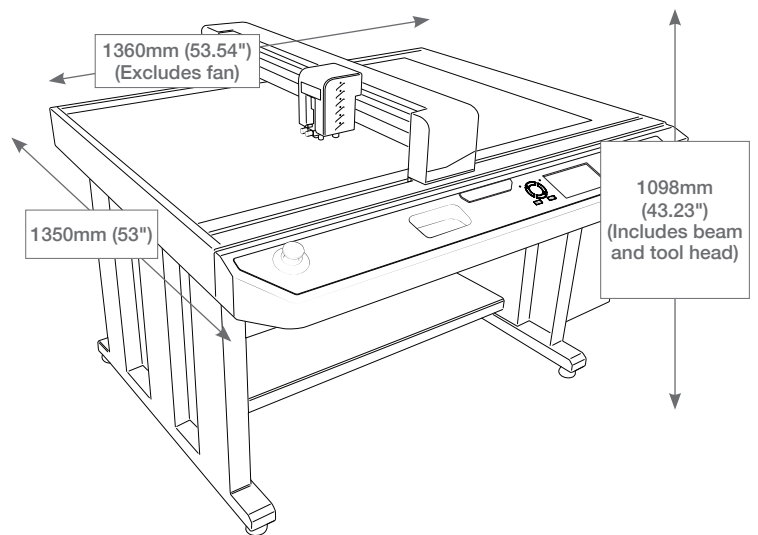
# Technical Specification

## ColorCut FB1190<sup>T</sup>

Max media size	1360mm x 1350mm x 1098mm
Effective contour cutting area	680mm x 1010mm
Speed options	High Definition: 750mm/s Standard Mode: 960mm/s Fast Mode: up to 1,200mm/s
Format size	B1 (4 x SRA3 / 8 x SRA4) US Arch E1 (4 x Tabloid Extra)
Type of cut	Die-Cut, Half Cut (Kiss-cut) & Perforation
Max. cutting depth	Passive Tool: Paper/card up to 800micron. Maximum depth: 1000micron (low density substrate i.e., rice paper / soft board). Active Tangential Blade: Fluted / corrugated board up to 3mm
Dimensions	L 1360mm x W 1350mm x H 1098mm (excludes vacuum fan)
Power supply	220v 50/60Hz, 350W (voltage specific)
Weight (unpacked) inc. stand	109kgs includes vacuum fan

## Software and PC Specification - all models

ColorCut Pro 5 Plugin - PC	Adobe® Illustrator® 2017 - 2025 or CorelDRAW® 2017 - 2024 Graphics Suite
ColorCut Pro 5 Plugin - Mac Client	Adobe Illustrator® 2022 - 2025. Mac operating systems: Catalina to Sequoia
ColorCut Pro 5 Standalone - PC Only	Job server version - enables jobs created by the ColorCut Pro Plugin above to be cut at any time
Minimum PC specification	Windows® 10/11 Pro x64 bit. 4GB of RAM (8GB recommended). Monitor res: 1280 x 960 or higher



[www.plockmaticgroup.com](http://www.plockmaticgroup.com)

**\*Disclaimer** As part of our continued product improvement plan, specifications and information published here are subject to change without notice. All specifications are dependent on application, type of stock, temperature, RH and print engine used. Specifications quoted were measured on uncoated and unprinted stock. E & OE.